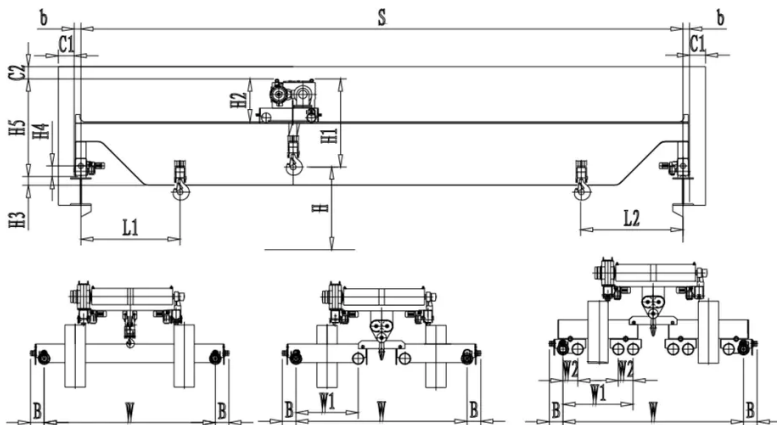


## 新型葫芦双梁外形尺寸及参数

New types dimensions and parameters of European gourd double beam



H-起升高度

Hoisting height

V1-起升速度

Hoisting speed

V2-小车运行速度

Traveling speed of trolley

V3-大车运行速度

Traveling speed of crane

L1-起重机左极限

Left limit of crane

L2-起重机右极限

Right limit of crane

C1-起重机两端最小极限

Minimum limit of both ends

C2-起重机顶部最小极限

Minimum limit of top of crane

S-起重机跨度

Crane span

H1-起重机小车钩心到顶部的距离

Distance between core of hook and its top

H2-起重机小车的高度 Height of trolley

H3-起重机底部到大车轨道面的距离

Distance between the bottom of crane and crane rail plane

H4-起重机缓冲器到大车轨道面的距离

Distance between buffer of crane and crane rail plane

H5-起重机顶部到大车轨道面的距离

Distance between the top of crane and crane rail plane

W-起重机最外两个车轮之间的距离

Distance between two outmost wheels of crane

W1-起重机一角最外两个车轮之间的距离

Distance between two outmost wheels of one corner of crane

W2-起重机台车两个车轮之间的距离

Distance between two wheels of trolley

B-起重机最外车轮距离缓冲器端部之间的距离

Distance from the outmost wheel to ends of buffer

b-起重机最端部距离大车轨道之间的距离

Distance from ends to rail of crane

G-起重机整车的重量 Overall weight of crane

K-起重机最大轮压 Maximum wheel pressure of crane

P-起重机总的功率 Total power of crane

## 选型说明

- 1、本产品系列表仅列出了常用的基本的规格起重机，工作级别为A5(FEM 2m)时的标准跨度，没有副钩的室内用起重机。客户根据需要可以提出相应的要求。
- 2、本系列也可以增加副起重机构，也可以增加轻载时速度加倍的设置，一般主副的设置为4:1，也可以根据客户的要求设定。因设置副钩则起重机的总重及轮压会有所增加。
- 3、表中的尺寸，重量，轮压供客户订货时参考，如果客户的需要条件发生变化，如工作级别，速度，起升高度有变化时，相应的参数，尺寸，重量，轮压等都会发生变化，实际的参数，质量，轮压以合同的要求为准。
- 4、表中列出的起升速度，大小车速度为标准值，可以根据客户的需求做相应的调整。
- 5、技术参数及尺寸会因为技术的改进或者升级有所变化，如有疑问的话可以和公司技术部联系。

### Instructions for selecting type

1. This series tables of product only list the general crane with basic specifications, including the standard span at working level A5 (FEM 2m) and indoor crane without auxiliary hook. Customers can make relevant requirements according to their demands.
2. This series can add to auxiliary hoisting mechanism, and also the speed doubler if run with light load. Ordinarily, the setting of the main and auxiliary should be 4:1, which also be set in accordance with requirements of customers. It will increase the total weight and wheel pressure if adding to auxiliary hook.
3. Dimensions, weight and wheel pressure in table will be reference for ordering of customers. If requirements of customers get changed, such as some changes occurred to working level, speed and lifting height, the relevant parameters, dimensions, weight and wheel pressure will also get changed. The actual parameters, quality and wheel pressure should subject to the requirements in contract.
4. Lifting speed, speed of crane and trolley traveling listed in table are standard values, which can be correspondingly regulated according to demands of users.
5. Technical parameters and dimensions would be changed as with improvement or upgrade of technology. Please contact with technology department in our company if any questions.

## 葫芦双梁技术参数 Technical Data of gourd double beam

	H	(m)	22	S	H1	H2	H3	H4	H5	W	W1	W2	b	B	G整车重量 Vehicle weight(t)	K角轮压 Wheel pressure angle(kN)	轨道型号 Track Model	P总功率 Total power (kW)									
Et A5 FEM 2m	V1		10.5	10.5	1500	700	-150	250	1490	4000	3150		260	135	4.7	43	38kg/m	8.24									
	V2	m/ min	20	13.5			-150																			5.4	44
	V3		32	16.5			-50																			6.9	48
	L1		560	19.5			50								8.9	53											
	L2		960	22.5			150								10.6	57											
	C1	(mm)	>80	25.5			250								12.1	61											
	C2		>300	28.5			350			5000					14.1	66											
				31.5			500								17.6	74											

\* 本样本数据仅供选型参考，具体数据请咨询矿山集团技术部。

### 葫芦双梁技术参数 Technical Data of gourd double beam

	H	(m)	16.5	S	H1	H2	H3	H4	H5	W	W1	W2	B	b	G整车重量	K角轮压	轨道型号	P总功率		
															Vehicle weight(t)	Wheel pressure angle(kN)	Track Model	Total power (kW)		
10t A5 FEM 2m	V1	m/ min	5.3	10.5	1500	700	-150	250	1490	3150			260	135	4.9	69	38kg/m	11.88		
	V2		20	13.5			-100								6.6	73				
	V3		32	16.5			0								11.5	85				
	L1	(mm)	560	19.5			150	4000										12.8	89	12.58
	L2		960	22.5			250											15.3	95	
	C1		>80	25.5			350											17.3	100	
	C2		>300	28.5			500											19	105	
				31.5				550	350	1590	5000				325	170		22.4	11.3	

	H	(m)	13	S	H1	H2	H3	H4	H5	W	W1	W2	B	b	G整车重量	K角轮压	轨道型号	P总功率		
															Vehicle weight(t)	Wheel pressure angle(kN)	Track Model	Total power (kW)		
16t A5 FEM 2m	V1	m/ min	3.9	10.5	1600	750	-150	350	1650	3150			325	170	7.4	110	38kg/m	20.1		
	V2		20	13.5			-100								8.9	113				
	V3		32	16.5			-0								11.1	119				
	L1	(mm)	650	19.5			150	4000										13.2	124	21.5
	L2		1050	22.5			150											16.6	133	
	C1		>80	25.5			300											19.7	140	
	C2		>300	28.5			400											21.6	148	
				31.5				500	450	1750	5000				370	220		24.6	154	

	H	(m)	13	S	H1	H2	H3	H4	H5	W	W1	W2	B	b	G整车重量	K角轮压	轨道型号	P总功率		
															Vehicle weight(t)	Wheel pressure angle(kN)	Track Model	Total power (kW)		
20t A5 FEM 2m	V1	m/ min	3.8	10.5	1890	750	-150	350	1750	3150			325	170	8	130	38kg/m	20.1		
	V2		20	13.5			-50								9.5	134				
	V3		32	16.5			80								11.4	138				
	L1	(mm)	900	19.5			180	4000										13.3	143	21.5
	L2		1100	22.5			230											16.9	152	
	C1		>80	25.5			230											20.1	160	
	C2		>300	28.5			480											24.6	171	
				31.5				480	450	1850	5000				370	220		28.3	180	

\* 本样本数据仅供选型参考，具体数据请咨询矿山集团技术部。

### 葫芦双梁技术参数 Technical Data of gourd double beam

	H	(m)	13	S	H1	H2	H3	H4	H5	W	W1	W2	B	b	G整车重量	K角轮压	轨道型号	P总功率					
															Vehicle weight(t)	Wheel pressure angle(kN)			Track Model	Total power (kW)			
25t A5 FEM 2m	V1	m/ min	3.9	10.5	1900	750	-200	450	1850	4000			370	220	9.4	158	38kg/m	24.4					
	V2		20	13.5			-50								10	160							
	V3		32	16.5			200								13.8	169							
	L1	(mm)	950	19.5			350	16.1	175						19	183		22	190	26.5	201	26	
	L2		1150	22.5			500																
	C1		>80	25.5			600	500	495														230
	C2		>300	28.5			600																
				31.5				600															28

	H	(m)	13	S	H1	H2	H3	H4	H5	W	W1	W2	B	b	G整车重量	K角轮压	轨道型号	P总功率			
															Vehicle weight(t)	Wheel pressure angle(kN)			Track Model	Total power (kW)	
32t A5 FEM 2m	V1	m/ min	3.8	10.5	2100	950	-200	500	2150	4000			495	230	10.4	201	QU70	28.2			
	V2		20	13.5			-50								11.5	204					
	V3		32	16.5			200								15.1	212					
	L1	(mm)	950	19.5			350	17.4	219						20.4	226		23.6	234	28.3	246
	L2		1150	22.5			500														
	C1		>80	25.5			600	5000													
	C2		>300	28.5			600														
				31.5				600													

	H	(m)	14.5	S	H1	H2	H3	H4	H5	W	W1	W2	B	b	G整车重量	K角轮压	轨道型号	P总功率			
															Vehicle weight(t)	Wheel pressure angle(kN)			Track Model	Total power (kW)	
40t A5 FEM 2m	V1	m/ min	3.25	10.5	2350	950	-150	500	2150	5100			495	230	13.6	254	QU70	39			
	V2		20	13.5			-100								15.6	260					
	V3		32	16.5			250								19.6	269					
	L1	(mm)	950	19.5			450	21.6	273						25.6	283		29.1	292	33.1	303
	L2		1150	22.5			550														
	C1		>80	25.5			550	38.1	315												
	C2		>300	28.5			550														
				31.5				550													

\* 本样本数据仅供选型参考，具体数据请咨询矿山集团技术部。

### 葫芦双梁技术参数 Technical Data of gourd double beam

	H (m)	12.5	S	H1	H2	H3	H4	H5	W	W1	W2	B	b	G整车重量	K角轮压	轨道型号	P总功率	
														Vehicle weight(t)	Wheel pressure angle(kN)			Track Model
50t A5 FEM 2m	V1	2.9	10.5	2550	1000	-200	500	2250	5100			495	230	14.6	311	QU70	47	
	V2	m/min	20			13.5								50	16.6			317
	V3		32			16.5								200	20.6			326
	L1		1000			19.5								400	22.7			332
	L2	(mm)	1150			22.5								500	26.6		341	49
	C1		>80			25.5								500	31.6		354	
	C2		>300			28.5								500	34.6		361	
						31.5								500	40.1		375	

	H (m)	17	S	H1	H2	H3	H4	H5	W	W1	W2	B	b	G整车重量	K角轮压	轨道型号	P总功率				
														Vehicle weight(t)	Wheel pressure angle(kN)			Track Model	Total power (kW)		
63t A5 FEM 2m	V1	3.3	13.5	2750	1050	300	450	2330	5800	2200		370	220	23.2	205	QU80	53.4				
	V2	m/min	20			16.5								300	26.4			209			
	V3		32			19.5								550	30.8			215			
	L1		1000			22.5								550	35.7			220			
	L2	(mm)	1150			25.5								550	40.7		227	495	230	52.7	241
	C1		>80			28.5								550	52.7		241				
	C2		>300			31.5								550	63.2		255				

	H (m)	15	S	H1	H2	H3	H4	H5	W	W1	W2	B	b	G整车重量	K角轮压	轨道型号	P总功率					
														Vehicle weight(t)	Wheel pressure angle(kN)			Track Model	Total power (kW)			
80t A5 FEM 2m	V1	3.3	13.5	2850	1150	300	450	2330	5800	2200		480	230	18.5	255	QU80	73					
	V2	m/min	20			16.5								300	34			264				
	V3		32			19.5								550	38			270				
	L1		1000			22.5								550	42.5			275				
	L2	(mm)	1150			25.5								550	50.5		285	480	230	60	297	77
	C1		>80			28.5								550	60		297					
	C2		>300			31.5								550	69		308					

\* 本样本数据仅供选型参考，具体数据请咨询矿山集团技术部。