

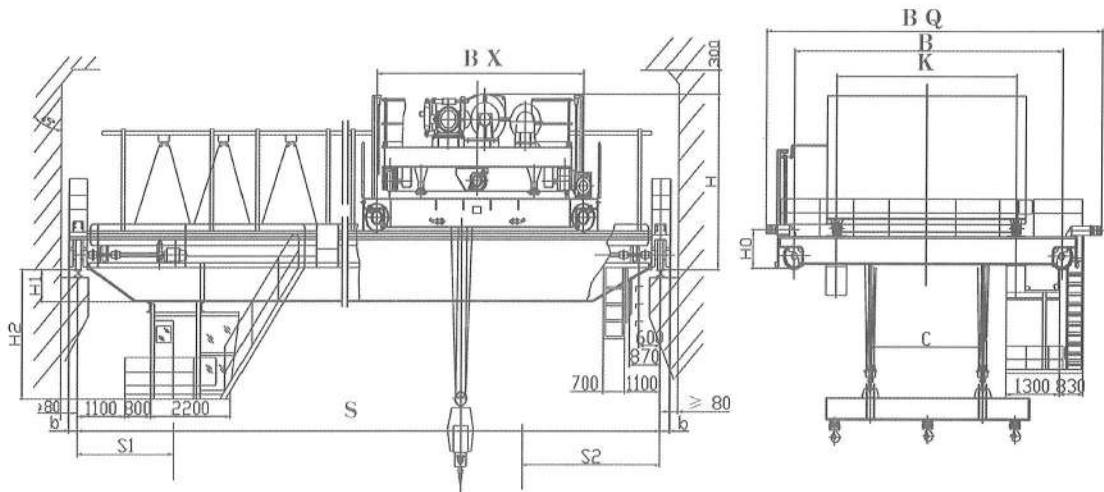
# 上/下旋转挂梁电磁桥式起重机



Upper / lower rotating hanging beam electromagnetic bridge crane

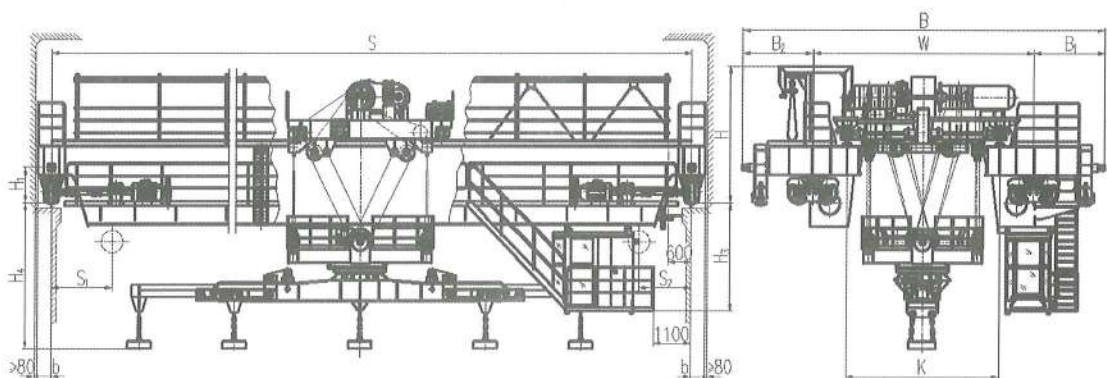
本起重机带有可旋转的电磁挂梁，用于钢厂、船厂、港口、堆场和仓储等室内或露天的固定跨间，装卸及搬运钢板、型钢、盘卷等物料。根据用户要求可提供：各机构的调速(1: 10或更大)、超载及报警、遥控、PLC控制及故障检测、显示、记录和打印系统等。(以下参数为室内用)

This crane is equipped with a rotatable electromagnetic hanging beam, which is used for loading, unloading and handling steel plates, section steels, coils and other materials in steel plants, shipyards, ports, storage yards and other indoor or outdoor fixed spans. According to the user's requirements, it can provide: speed regulation (1:10 or greater), overload and alarm, remote control, PLC control and fault detection, display, recording and printing systems of each mechanism. (the following parameters are for indoor use)



## 上旋转挂梁电磁桥式起重机

Electromagnetic bridge crane with upper rotating hanging beam



## 下旋转挂梁电磁桥式起重机

Electromagnetic bridge crane with lower rotating hanging beam

# 下旋转挂梁电磁桥式起重机

Lower rotating hanging beam electromagnetic bridge crane



## 技术参数 Technological parameter

### 下旋转挂梁电磁桥式起重机

净起重量Clean Weight		t	15	25	30	
工作级别 working class			A6			
跨度span		m	34.3	46.3	53.3	
最大起升高度Max Lifting Height			5.5	5	5	
速度 Speed	起升 lifting		m/min	12.2	11.8	12
	运行 travelling	小车运行 Travelling of crab		38.7	38	40.8
		大车运行 Travelling of trolley		82.5	82.5	82.5
	挂梁 Hang beam	旋转 Revolve	r/min	1	1	1
		伸缩 Flexible	m/min	5 / 10	5 / 10	5 / 10
主要尺寸(mm) Main Dimensions		H	3850	3860	4350	
		H <sub>1</sub>	1000	1000	1000	
		H <sub>3</sub>	2750	3300	2900	
		H <sub>4</sub>	4250	4600	4300	
		K	4500	5500	5500	
		B <sub>0</sub>	10800	12100	12500	
		B	6300	7500	8000	
		b	400	400	400	
		B <sub>1</sub>	2250	2300	2250	
		B <sub>2</sub>	2250	2300	2250	
		S <sub>1</sub>	2600	2600	2700	
		S <sub>2</sub>	2800	2800	2850	
最大轮压 Max. wheel pressure		KN	220	325	410	
荐用钢轨 Steel track recommended			QU100			
电 源 Power source			三相交流 3-phase A.C 380V 50Hz			